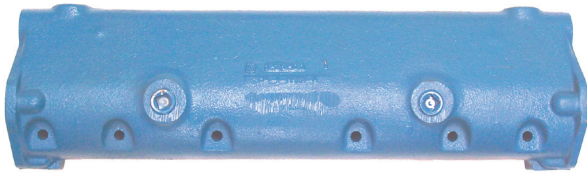


Chrysler V8 - 361, 383, 400, 413, 426 and 440 C.I.D.

All Models. 1959 and Up Log Style Direct Replacement



CM 1 5972A



CM 20 4142411



CM 20 9232



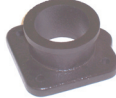
CM 20 9234



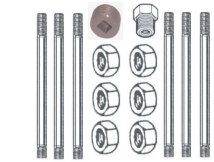
CM 1 5972B



1 0067



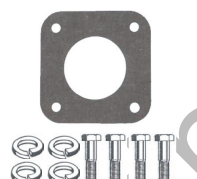
1 0007



CM 1 5972SS P



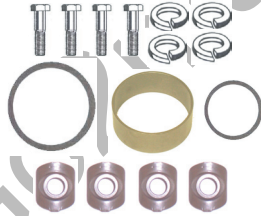
CM 1 5972G P



CM 20 9234P



CM 20 4142411P



CM 20 9232P



CM 1 5972D



CM 1 5972P



CM 20 9224



CM 1 5972C



CM 50 114942



CM 50 6023040



CM 20 1947617



CM 20 9226



CM 20 9225

CM-1-5972A	Direct replacement water cooled manifold for big block Chrysler.
CM-20-4142411	Exhaust riser/upper elbow. Direct replacement for Chrysler part #'s 3745639, 2847623, 2847404 and E9233M.
CM-20-9232	6" exhaust elbow high riser extension. Direct replacement for Chrysler part # E9232M.
CM-20-9234	Exhaust riser lower elbow. Direct replacement for Chrysler part # E9234M.
1-0007	Adaptor for rear end of manifold. Use with Barr style exhaust risers or elbow connectors.
1-0067	2 1/2" N.P.T. threaded exhaust end plate.
CM-1-5972B	Direct replacement front end plate.
CM-1-5972C	End plate gasket, (2) required per manifold.
CM-1-5972D	Copper water distribution tube. Replaces original tube where used.
CM-1-5972G-P	Manifold to cylinder head mounting kit (includes bolts, manifold to head gaskets and brass drain plug).
CM-1-5972P	Manifold to cylinder head mounting gasket set.
CM-1-5972SS-P	Manifold to cylinder head mounting kit (includes stainless steel studs and nuts, manifold to head gaskets and brass drain plugs).
CM-20-1947617	Exhaust elbow extension retainer.
CM-20-4142411P	Mounting kit for upper riser/elbow (includes sleeve, O-rings, retainers, bolts and pipe plugs).
CM-20-9224	Exhaust elbow to extension seal retainer sleeve.
CM-20-9225	Exhaust elbow to extension inner seal.
CM-20-9226	Exhaust elbow to extension outer seal.
CM-20-9232P	Mounting kit for 6" extension (includes sleeve, O-rings, clamps and bolts).
CM-20-9234P	Mounting kit for lower elbow riser (includes bolts, gasket and pipe plugs).
CM-50-114942	Stainless steel exhaust manifold stud nut.
CM-50-5023040	Stainless steel exhaust manifold stud.

Note: Manifold includes *all mounting hardware to head, gaskets and plugs.* **Swivel-style connector packages must be purchased separate for the corresponding riser/elbows.**