

Questions & Orders Toll Free: (800) 800-1640



E-Z ANCHOR PULLER MFG. CO.
America's Anchor Winch Since 1990

30
YEARS
ANNIVERSARY



Above Deck or Below, E-Z Anchor Puller Is The Way To Go!

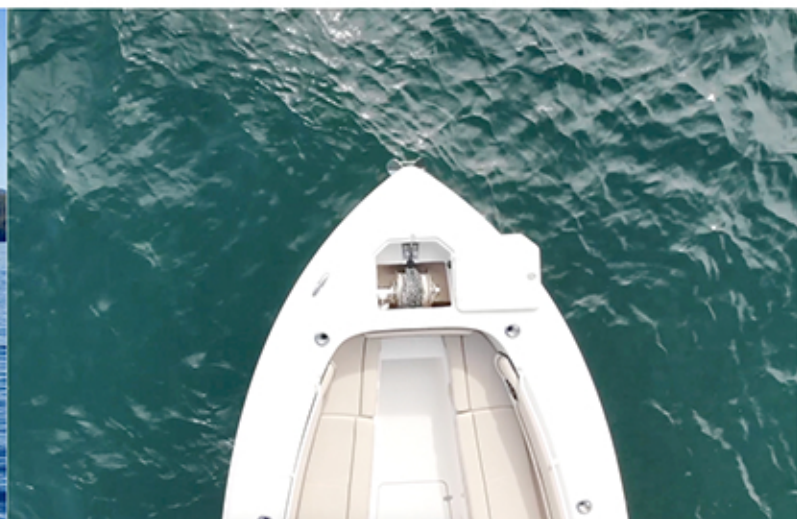
HERO **PATRIOT** **REBEL**

For Pricing & To Order Online Visit www.ezanchorpuller.com

2020 E-Z Anchor Puller Mfg Co. All rights reserved

Above Deck or Below, E-Z Anchor Puller Is The Way To Go!

Above deck on a 28' Offshore by Duckworth or below deck inside the rope locker of a 35' SeaChaser by Carolina Skiff, both production boat builders include the REBEL EZ-4 as a standard feature on all new 2020 models. Whether you own an aluminum boat on the west coast, a fiberglass boat on the east coast, or on the great lakes & anywhere in between, the compact design and 316 stainless steel components ensure E-Z Anchor Puller drum anchor winches fit into tight spaces and continue to perform in harsh salt water environments.



Why should I use an E-Z Anchor Puller and not a typical windlass?

**Hands Free, No Need to Tie to a Cleat!
Any Style or Size of Rope and/or Chain!
Always Neatly Spooled, Nothing to Jam!**

PATENTED 316 STAINLESS STEEL MOTORS WILL NOT CORRODE INSIDE OR OUT!

E-Z Anchor Puller motors are IP68 rated waterproof and use a patented system to mitigate internal condensation by filling the gaps inside the motor with high temperature plastic to reduce the internal atmosphere and lock the magnets in place. Our stainless steel motors are manufactured from stainless steel, not standard motors adapted with a cover or sleeve. All E-Z Anchor Puller motors have four magnets, four brushes, with brass brush holders no external brush caps and a calculated brush life of at least 10 years.

Stronger & Faster than the competition, E-Z Anchor Puller Drum Anchor Winches offer unmatched performance and reliability. From small recreational boats to Commercial Vessels to 55ft, there is a HERO, PATRIOT or REBEL Series Drum Anchor Winch just right for your boat and backed by our famous 7 + Life Warranty.

HERO, PATRIOT or REBEL? Which drum anchor winch do I choose?

Start Here.

HERO, PATRIOT & REBEL Series Spool Size & Capacity Charts.

There are two main things to consider when determining the correct size & capacity of anchor winch for your boat. What diameter & what length of rope do you intend to have on your anchor winch? A diameter of 1/8" for every (9) feet of boat length & a minimum length of 3 times the depth of water you are anchoring in is suggested.

E-Z Anchor Puller Mfg. Co. offers 3 series of drum anchor winches. All include our famous 7 + Life Recreational Warranty or 3 + Life Commercial Warranty. All series offer Patented IP68 rated water proof motors. All have 316 stainless steel drums, driveshafts, and base plates. So whats the difference?

THE HERO & PATRIOT Series

For over 30 years E-Z Anchor Puller has manufactured world class drum anchor winches based on direct drive transmissions that are power down & power up. These direct drive transmissions utilize 60:1 ratio worm gears which turn the drive shaft which is also the spool shaft of the drum. The extreme reverse load inefficiency of a worm gear with 60 teeth or more performs as a mechanical brake preventing the anchor line on the drum from free spooling.

"If You're Going Deep, It's Gotta Have Free Fall!"

DEEP WATER ANCHORING IS A BREEZE WITH THE REBEL SERIES STANDARD AUTO DROP FREE FALL SYSTEM!

Unlike the direct drive transmissions of the HERO and PATRIOT series, the REBEL series drum anchor winches have a clutch and friction plate design to allow the drum to free spool when the clutch plate is dis-engaged. A quick 2 second push of the lower button rotates the clutch plate and your anchor line is released to free spool, dropping your anchor to the bottom at the fastest drop speeds possible. Once your anchor line is fully deployed, press and hold the raise button for 5 seconds, the clutch plate will again rotate this time clamping down on the drum and holding the boat at anchor. If you choose to temporarily suspend the REBEL's Auto Drop FREE FALL feature and operate in a "power down" mode, just loosen the clutch block set screw on the side of the base-plate and lower the clutch block preventing it from interacting with the clutch plate. To return Auto FREE FALL, just raise the clutch block to the top of the slot and tighten the set screw.

You Can't See It, But It's There!

E-Z Anchor Puller REBEL series drum anchor winches have an internal structural frame stiffener inside the drum shaft. This internal frame stiffener connects both upper sides of the baseplate increasing the strength of the winch and preventing high torque wobble of the drum.

REBEL series drum anchor winches also have an internal spring around the drive shaft that keeps constant pressure against the braking plate which prevents the drum from backlashing once the anchor hits the bottom after free fall.



HERO

Aluminum Alloy Direct Drive

EX-1, EX-2, EX-3

Direct Drive - Power Down and Power Up
Aluminum Powder Coated Gearbox and Motor
For Boats 20' - 27'



Series	Model #	Suggested Boat Length													
		18' - 21'		21' - 24'		24' - 27'		27' - 30'		27' - 35'		35' - 45'		45' - 55'	
		1/4" Line	1/4" Chain	5/16" Line	1/4" Chain	3/8" Line	5/16" Chain	7/16" Line	5/16" Chain	1/2" Line	3/8" Chain	5/8" Line	3/8" Chain	3/4" Line	3/4" Chain
HERO	EX-1	250'	10'	175'	10'	115'	10'								
HERO	EX-2	375'	10'	225'	10'	175'	10'								
HERO	EX-3	550'	10'	350'	10'	250'	10'	175'	10'	150'	10'				

PATRIOT

Stainless Steel Direct Drive

EZ-1, EZ-2, EZ-3

Direct Drive - Power Down and Power Up
316 Stainless Steel Gearbox and Motor
For Boats 20' - 30'



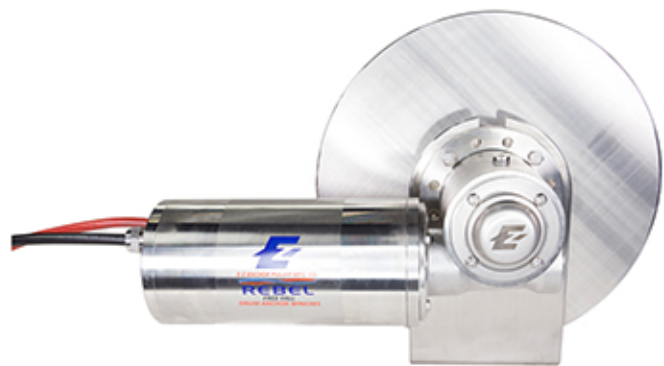
Series	Model #	Suggested Boat Length													
		18' - 21'		21' - 24'		24' - 27'		27' - 30'		27' - 35'		35' - 45'		45' - 55'	
		1/4" Line	1/4" Chain	5/16" Line	1/4" Chain	3/8" Line	5/16" Chain	7/16" Line	5/16" Chain	1/2" Line	3/8" Chain	5/8" Line	3/8" Chain	3/4" Line	3/4" Chain
PATRIOT	EZ-1	375'	10'	225'	10'	175'	10'								
PATRIOT	EZ-2	550'	10'	350'	10'	250'	10'	175'	10'	150'	10'				
PATRIOT	EZ-3	725'	10'	500'	10'	325'	10'	225'	10'	200'	10'				

REBEL

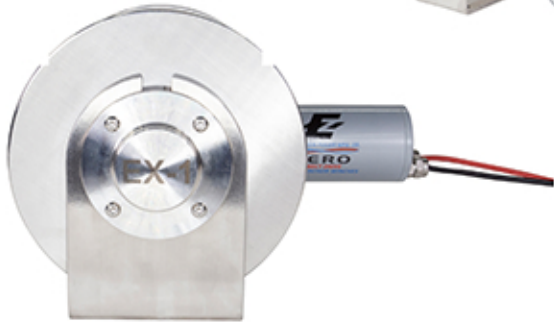
Stainless Steel Free Fall

EZ-4, EZ-5, EZ-6

Free Fall - Auto-drop Down and Power Up
316 Stainless Steel Gearbox and Motor
For Boats 30' - 55'



Series	Model #	Suggested Boat Length													
		18' - 21'		21' - 24'		24' - 27'		27' - 30'		27' - 35'		35' - 45'		45' - 55'	
		1/4" Line	1/4" Chain	5/16" Line	1/4" Chain	3/8" Line	5/16" Chain	7/16" Line	5/16" Chain	1/2" Line	3/8" Chain	5/8" Line	3/8" Chain	3/4" Line	3/4" Chain
REBEL	EZ-4	975'	10'	600'	10'	400'	10'	300'	10'	265'	10'				
REBEL	EZ-5	1750'	10'	1100'	10'	800'	10'	550'	10'	425'	10'	275'	20'		
REBEL	EZ-6	3000'	10'	1950'	10'	1350'	10'	975'	10'	800'	10'	500'	20'	350'	20'



Suggested Applications:

Fresh Water Inland Lakes & Rivers
Shallow Coastal Salt Water with fresh water rinse after use
Ask About The NEW Pontoon Solution Accessory!

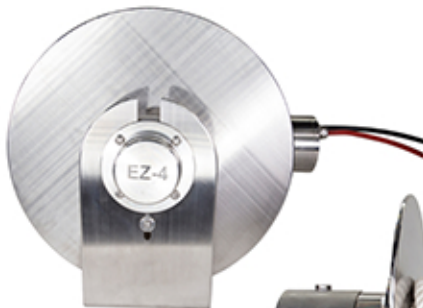
Model	EX-1	EX-2	EX-3
Metal Type	Aluminum Alloy	Aluminum Alloy	Aluminum Alloy
Vessel Length	18' - 21' / 6m - 7m	18' - 21' / 6m - 7m	21' - 24' / 7m - 8m
Spool Size	7" (180mm) L x 8" (200mm) Dia.	8" (200mm) L x 9.5" (240mm) Dia.	8" (200mm) L x 11" (280mm) Dia.
Power Supply (Dc)	12v	12v	12v
Circuit Breaker	40 Amp	60 Amp	60 Amp
Motor (Watts)	480w	720w	720w
Motor Size Dia.	75mm	90mm	90mm
Gearbox Size	30AA	44AA	44AA
Max Pulling Load	1,000 lb / 454 kg	1,250 lb / 567 kg	1,250 lb / 567 kg
Max Recommended Working Load	160 lb / 73 kg	200 lb / 91 kg	200 lb / 91 kg
Net Weight	20 lb / 9 kg	33 lb / 15 kg	35 lb / 16 kg
Gross Weight	26 lb / 12 kg	42 lb / 19 kg	44 lb / 20 kg



Suggested Applications:

Shallow Coastal Salt Water
Ask About The NEW Pontoon Solution Accessory!

Model	EZ-1	EZ-2	EZ-3
Metal Type	316 Stainless Steel	316 Stainless Steel	316 Stainless Steel
Vessel Length	18' - 21' / 6m - 7m	21' - 24' / 7m - 8m	24' - 27' / 8m - 9m
Spool Size	8" (200mm) L x 9.5" (240mm) Dia.	8" (200mm) L x 11" (280mm) Dia.	9" (230mm) L x 12" (305mm) Dia.
Power Supply (Dc)	12v	12v	12v
Circuit Breaker	60 Amp	80 Amp	100 Amp
Motor (Watts)	720w	960w	1200w
Motor Size Dia.	90mm	110mm	110mm
Gearbox Size	40SS	40SS	40SS
Max Pulling Load	1,250 lb / 567 kg	1,600 lb / 725 kg	1,850 lb / 840 kg
Max Recommended Working Load	200 lb / 91 kg	256 lb / 117 kg	295 lb / 133 kg
Net Weight	42 lb / 19 kg	51 lb / 23 kg	64 lb / 29 kg
Gross Weight	51 lb / 23 kg	59 lb / 27 kg	75 lb / 34 kg



Suggested Applications:

Deep Coastal Salt Water
When Fast Anchor Deployment is Critical
Ask About The Optional 24 Volt Motor and Solenoid!

Model	EZ-4	EZ-5	EZ-6
Metal Type	316 Stainless Steel	316 Stainless Steel	316 Stainless Steel
Vessel Length	27' - 35' / 8m - 11m	35' - 45' / 11m - 14m	45' - 55' / 14m - 17m
Spool Size	9" (230mm) L x 14" (355mm) Dia.	11" (280mm) L x 16" (405mm) Dia.	14" (355mm) L x 18" (455mm) Dia.
Power Supply (Dc)	12v	12v	12v
Circuit Breaker	100 Amp	120 Amp	120 Amp
Motor (Watts)	1200w	1500w	1500w
Motor Size Dia.	110mm	130mm	130mm
Gearbox Size	40SS	63SS	63SS
Max Pulling Load	1,850 lb / 840 kg	2,000 lb / 907 kg	2,000 lb / 907 kg
Max Recommended Working Load	295 lb / 133 kg	320 lb / 145 kg	320 lb / 145 kg
Net Weight	75 lb / 34 kg	108 lb / 49kg	121 lb / 55 kg
Gross Weight	88 lb / 40 kg	123 lb / 56 kg	141 lb / 64 kg

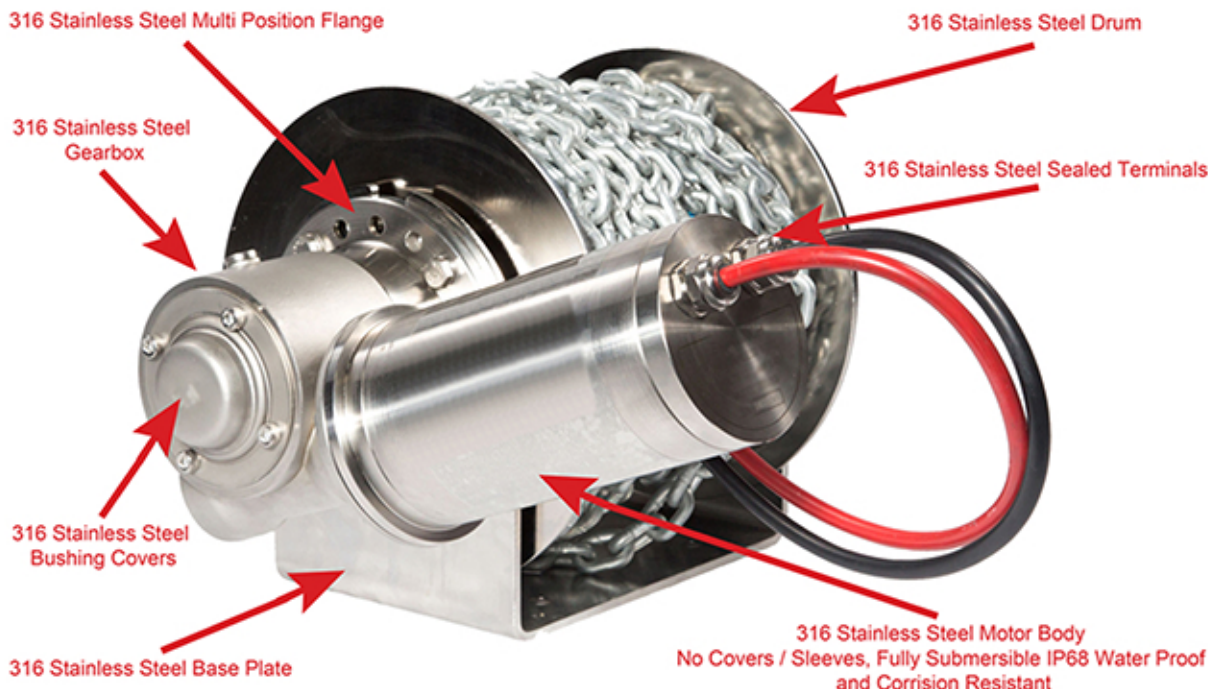
Support Our Authorized Retailer:



E-Z ANCHOR PULLER MFG. CO.
America's Anchor Winch Since 1990

30 YEARS
ANNIVERSARY

316 STAINLESS STEEL COMPONENTS OF PATRIOT & REBEL SERIES DRUM ANCHOR WINCHES



MEMBER OF
ABYC
Setting Standards for Safer Boating

MEMBER OF
NMMA
National Marine Manufacturers Association



OEM BOAT BUILDERS THAT USE OUR PRODUCTS



For Pricing & To Order Online Visit www.ezanchorpuller.com

2020 E-Z Anchor Puller Mfg Co. All rights reserved