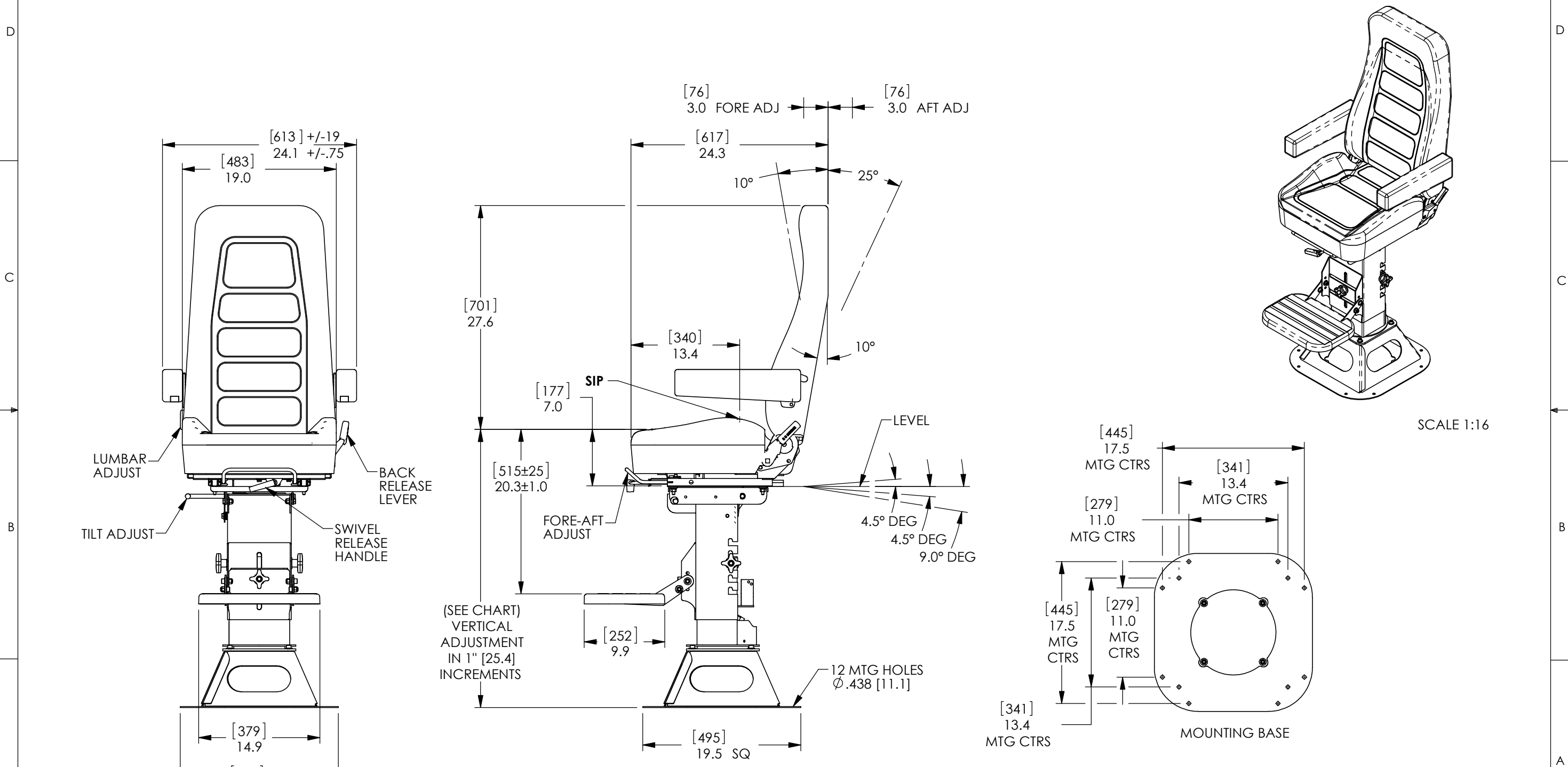


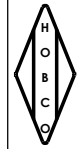
PART NUMBER	DESCRIPTION	HEIGHT RANGE	WEIGHT
4926-1000M	SEAPOST HBRX , 6" ADJ, SWIVEL, HIGH-BASE	32"-38" [813-965MM]	118 LBS [53.5 KGS]
4926-2000M	SEAPOST HBRX, 6" ADJ, SWIVEL, MID-BASE	28"-34" [711-864MM]	112 LBS [51.0 KGS]
4926-3000M	SEAPOST HBRX, 6" ADJ, SWIVEL, LOW-BASE	23"-29" [584-737MM]	106 LBS [48.5 KGS]

PART NUMBER  
**4926 SERIES**



SCALE 1:16

- NOTES:**
- ALL DIMENSIONS HAVE AN IMPLIED TOLERANCE OF  $\pm .50"$  [12.7 MM] EXCEPT THE MOUNTING DIMENSIONS.
  - DIMENSIONS IN [ ] ARE IN MILLIMETERS.
  - DWG IS CONTROLLING DOCUMENT FOR DIMENSIONS. 3D MODEL DIMENSIONS MAY DIFFER FROM DWG.

 <p><b>H.O. BOSTROM</b> H.O. BOSTROM CO., INC. 818 PROGRESS AVENUE WAUKESHA, WI 53186</p>	<p>DESCRIPTION <b>SEAPOST HBLX 6"ADJ, SWIVEL</b></p>		
	<p>CHECKED BY TDK</p>	<p>DRAWN BY KAR</p>	<p>FINISH BLACK POWDER COAT MICRO ZINC PHOSPHATE</p>
<p>DATE 6/28/2013</p>	<p>DATE 6/26/2008</p>	<p>PART NUMBER <b>4926 SERIES</b></p>	
<p>SIMILAR TO</p>	<p>SCALE 1:12</p>	<p>REV LVL <b>C</b></p>	

NOTICE:  
THIS DRAWING CONTAINS CONFIDENTIAL  
PROPRIETARY INFORMATION OWNED BY H.O. BOSTROM, INC.  
BY ACCEPTING THIS DRAWING, THE BORROWER AGREES NOT TO  
DISCLOSE, USE OR DUPLICATE IT TO OTHERS, EXCEPT AS  
AUTHORIZED IN WRITING BY H.O. BOSTROM CO., INC.